

ABRIEL ABBEY 1

Location: Meselyne Shire, Kaldor
Holder: Bishop of Nurez
Liege: Archbishop of Kaldor
Population: 216

HISTORY

Abriel was settled by the devastated peoples who survived Lothrim the foulspawner's reign of terror. Abriel grew from the ruins with the small kingdom of Nurelia into a large settlement. Sanric II a devout Laranian granted the lands to the Laranian Church in 170 and commissioned the construction of the abbey. The prosperous years preceding the migration wars resulted in a considerable investment of wealth in the grounds.

King Brant shared his father's love of the religion and continued substantial grants to the church, commissioning many of the theological art-works at the abbey, including the signature work Our Lady of Reluctance.

The village was eastward enough to avoid much of the migration wars, but was sacked by the Western Taelda in 235.

The abbey miraculously withstood the battle, but Lotin the Gray was killed in a retaliatory assault on the barbarian hordes.

It is commonly rumored that Prince Brant of Nurelia was cloistered in seclusion at Abriel by Kalabin of Kaldor shortly after Nurelia's Barons gave the throne to Kaldor's King. Few outside of Abriel believe this, as the story of the unfortunate prince's death at Olokand is more romantic.

When Kalabin took the throne, the Archbishop of Nurelia became the Bishop of Nurez. Abriel has continued as an important theological center for the church in Kaldor.

ECONOMICS

Abriel is the Hundred moot for Nelafayn Hundred, and a commercial center of agriculture. The Bishop downplays the importance of commerce.

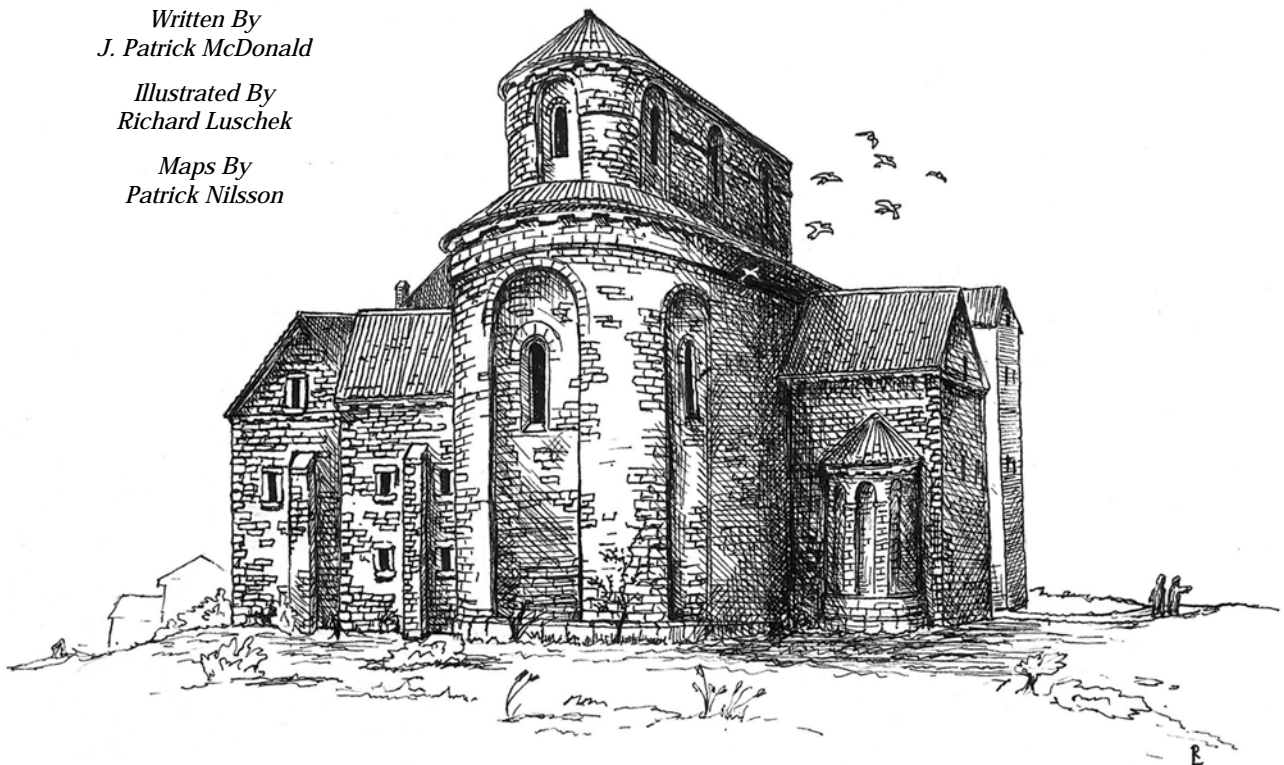
The lands surrounding Abriel are rich, and produce a variety of agricultural products. Good wheat, strong barley; the swine are some of the best in the region. Small cattle herds are also kept in parts of the Hundred.

The Miners Guild operates a stone quarry west of Abriel for fees that provide additional resources to the bishop.

Written By
J. Patrick McDonald

Illustrated By
Richard Luschek

Maps By
Patrick Nilsson



ABRIEL ABBEY 2

Local Map Key

[A] Abriel Abbey

Seat of the Bishop of Nurez. *(See the following pages for a more detailed description)*

[B] Bishop's Hall

The personal residence of the Bishop. The hall is also used for the Hundred Moot. Manorial duties of the Lord are generally handled by the able but somewhat frail steward Leradas of Elen. *(See the following pages for a more detailed description)*

[C] Chapter house

Golian of Bireth, Reblena. (Kt. Commander) of the fighting Order of the Lady of Paladins. He is assisted by five Melana (Knights). The bishop barely tolerates this small military contingent. No Meken (common soldiery) are allowed. Golian secretly reports what little he can to Edine Kyne. *(See the following pages for a more detailed description)*

[D] Natural geography and fortifications

The Abbey is protected by significant stone outcroppings, and natural geography. These natural defenses were enhanced and a gate added when the Abbey was built. The precautions likely saved the Abbey from pillage shortly after their completion.

[E] Granaries

The Granaries hold enough stores to last a year.

[F] Burial plots and crypts

Abriel has extensive crypts. It is a popular burial site for clerics and occasionally, with significant donation, for Kaldor's devout nobility.

* Local Key for the main crypt *(See the following pages for a more detailed description)*

[G] Storage and tool sheds

These buildings are locked.

[H] Main Stables

Bonded Master Ostler Asalern of Lythar. Master Lythar draws stable boys from the local peasantry. His budget does not allow a journeyman, but he could use at least two. Asalern also cares for the bishop's steeds.

[I] Weapon smithy

See the chapter house on the following pages.

[J] Bishop's Stables

See the Main Stables above.

The Village Residents

1 VILLEIN (Lanas of Cymalian)

Size: 5

Lanas' brother and two sons work his fields. His daughter, a dreamer, helps his Goodwife manage their household.

2 METALSMITH (Mondir of Asana)

Size: 4

Quality: ****

Prices: Average

Mondir is single, irreverent, and a regular patron of the Chapel Inn. His business consists of smithing for the community. He supports three resident journeymen.

3 FARMER (Thiman of Sarlis)

Size: 4

Thiman's young wife recently delivered twins. He is the only freehold farmer in Abriel.

4 COTTAR (Balin of Ardin)

Size: 6

Balin has more children than he can feed. His wife died last winter giving birth to his fifth. His fortunes may improve over the next years, as his sons become old enough to help work the fields.

5 HALF-VILLEIN (Rakren of Kyrst)

Size: 2

Rakren recently married Inesa the eldest daughter of Torten of Faralin. Formerly a cottar, the marriage has improved his fortunes.

6 COTTAR (Davian of Ebarda)

Size: 6

Davian cares for his aging father, his wife's daft mother, and two small children. His fortunes are bleak.

7 VILLEIN (Kaman of Varlis)

Size: 8

Kaman was one of the wealthier villeins in Abriel until Peoni blessed he and his wife with six daughters. He has saved every penny he could for the last ten years for his daughters' dowries. His wife is busy arranging matches for his two eldest.

8 VILLEIN (Torten of Faralin)

Size: 8

Torten is the wealthiest serf in Abriel. His household has diminished as he married off his two eldest daughters. He has four sons coming of age; each sought after as husbands, and two younger daughters.

9 VILLEIN (Lasan of Asheral)

Size: 5

Lasan is a dour man. A devout Peonian who sees only the plight of poverty. His wife, two daughters, and a young son do not relieve his melancholy.

10 BEADLE (Birain of Tabela)

Size: 5

Birain stands over 6 feet and there are few men in the Hundred that will wrestle with him at village fairs. He has two strong sons who assist him with his tasks as Beadle. His youngest daughter is 13, and hopes dearly to wed Korian of Faralin, the third son of that clan.

11 HALF-VILLEIN (Landon of Amerl)

Size: 5

Landon is overly fond of the ale his wife makes and spends much of his time in its pleasures and less in his fields. At his wife's demands, he has been beset with the care of her sister and two illegitimate nieces.

12 HALF-VILLEIN (Gralda of Henermel)

Size: 6

Gralda is a capable husbandman. He and his wife care for his aging father, two sons, and a daughter.

13 HALF-VILLEIN (Hordis of Nart)

Size: 4

Hordis married Palael of Faralin who bore him a son and a daughter. Hordis was a villein when they wed. He has since lost favor with the Bishop. He has not spoken to his father-in-law after the incident.

14 HALF-VILLEIN (Berry of Awelesh)

Size: 3

Berry inherited his holdings from his father. He works the land with his two brothers.

15 THE CHAPEL INN (Frelyn of Varela)

Size: 4 Quality: **** Prices: High

Those seeking a refrain from the strict religious dogma of the Abbey can gain some repose at the Chapel Inn. The Inn is popular with Abbey visitors, many of whom prefer it to the Bishop's guest quarters. Frelyn of Varela runs the Inn with the help of her two sisters, Eilith & Hanlena. The sisters are quite beautiful, and take a casual attitude toward venery. Tallyn of Baeryn, one of Frelyn's lovers and a man of Jarin descent, is capable of handling any trouble. *(See the following pages for a more detailed description)*

16 WOODWARD (Charancë of Katen)

Size: 5 Quality: *** Prices: Average

Charancë is a skilled woodsman. Abriel wood however provides insufficient game for the large contingent of priesthood and nobles demanding meat for their table. Charancë has had to hunt other forests on occasion. While this is technically poaching, he has tacit agreements with neighboring Woodwards, and he never over-hunts a wood. His eldest daughter has learned much of her father's craft. He has two young sons. His wife is the envy of many a man in Abriel.

17 HALF-VILLEIN (Tolidal of Barl)

Size: 7

Tolidal's fortunes are falling. He has a wife, and two small children. His two hapless brothers and a wicked sister comprise the rest of his clan.

18 MILLER (Aras of Dyrela)

Size: 7 Quality: **** Prices: High

Aras is head of the local Lia-Kavair. His brother-in-law serves as lieutenant and runs games of chance at the Chapel Inn. Other activities are frowned upon by the Varela sisters. Aras has not yet forced his hand. Aras neglects his wife and three children. He makes a sizeable profit by shorting the local peasants on their milled grains.

19 REEVE (Ragen of Charen)

Size: 6

Ragen is 54. A wise man and extremely competent husbandman. He has been Reeve for over 20 years. His adult sons help in the fields and his daughters care for their sickly mother. Little happens in Abriel that he is not aware of.

20 HALF-VILLEIN (Yrunda of Sosor)

Size: 5

Clan Sosor is the oldest clan in Abriel. They trace their heritage back to the kingdom of Nurelia. Yrunda has a wife and three daughters.

21 HALF-VILLEIN (Monart of Banadar)

Size: 6

Monart has two daughters of age. He is negotiating for marriages into clan Faralin. His sons are old enough to work the fields. He petitioned for Villein status last year but was denied.

22 COTTAR (Gabril of Narador)

Size: 3

Gabril is a happy man despite his relative poverty. His wife gave birth to their first son last winter.

ABRIEL ABBEY 4

23 COTTAR (Adasaen of Abria)

Size: 5

Adasaen cares for his abusive wife and her two elderly parents. Their son is a halfwit.

24 VILLEIN (Zargen of Elena)

Size: 5

Zargen cares for his recently retired parents a young wife and newborn son.

25 COTTAR (Tamin of Cyrela)

Size: 1

Tamin is extremely handsome. He is desired by many of Abriel's daughters. His abilities as a farmer have kept him single due to the better judgement of their fathers.

26 HERDER (Urmin of Sargeriel)

Size: 6

Urmin and his two brothers tend the Abriel herds. Abriel has a descent selection of swine and a few cattle. Urmin is married and has two young daughters.

27 VILLEIN (Ibrial of Urlain)

Size: 7

Ibrial married into his wife's holdings. He works hard to feed his aging mother-in-law, a sister-in-law, and three young sons.

28 VILLEIN (Unden of Kolarbar)

Size: 6

Unden is addicted to Fanosel, which he buys from Aras of Dyrela. He beats his wife and four children. His eldest son has stolen a dagger from the Abriel armory and plans to murder his father.

29 COTTAR (Indag of Darengen)

Size: 1

Indag lost his wife and infant during childbirth last winter. He speaks little.

30 COTTAR (Kelvan of Asan)

Size: 5

Kelvan inherited his cottage when his father died. He is more skilled than his father is, but three unmarried sisters and a hapless brother hamper his efforts to improve his station.

31 CHARCOALER (Harabis of Melt)

Size: 5 Quality: *** Prices: Average

Harabis has considerable skill with slight of hand. He toys with sulfur, coal and other materials to perform small feats of pyrotechnics for the amusement of his three children. His wife makes the best dark ale in the hundred.

32 VILLEIN (Rorten of Ibin)

Size: 6

Rorten lost his wife in labor with their fifth child. He has three sons and two daughters.

33 COTTAR (Lorian of Krebel)

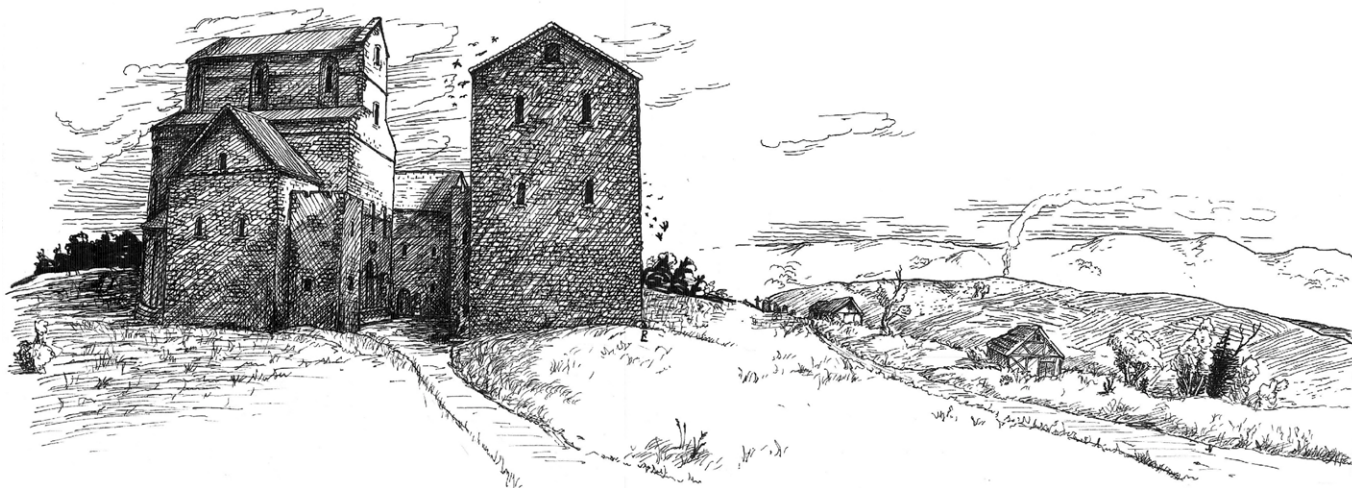
Size: 3

Lorian cares for his aging parents. They have lived a long life and demand constant care. Lorian grows weary of it.

34 GLEBE (Merudus of Arolis)

Size: 5

Merudus is a fat and jolly man who is overly fond of ale and music. He is a good man and cares deeply for his flock. On occasion he has allowed his passion for drink to threaten his vow of celibacy. He deeply regrets this. He is assisted by two priests and two priestesses.



POLITICAL & THEOLOGICAL CLIMATE

Abriel's political climate is dominated by the theological beliefs of the Bishop. Ilor Hadan is a deeply spiritual and idealistic man. It is said that his fervor clouds his judgement, and that it is unfortunate that he lacks the benefit of a more practical viewpoint to deal with the coming crisis.

Abriel serves the dual purpose of Bishopric, and Hundred Moot. As such, Ilor serves as both Bishop and Bailiff of the Hundred. Secular court (Hundred Moot) is held on the 14th of each month, the 15th is reserved for the religious matters.

Ilor's Devotion to Larani is unmatched within the Kingdom, and it is widely held that he is the most gifted priest in Kaldor. Many in the hierarchy consider him the most likely successor of Archbishop Edine Kyne.

Ilor's deeply committed theology manifests itself as a meticulous, even obsessive attention to the dogma and ritual of abbey life. Priests are strongly encouraged to rise early and spend an extra hour in prayer each day. Confession is encouraged daily. Even the routine tasks of running the abbey have been steeped in religious lore.

While the priests at the abbey have come to see Ilor's doctrine as a disciplined but livable way of life, the Knight's of the Order of the Lady of Paladins, see even temporary assignment here as the gravest of punishments.

THE RELUCTANT WAY

The dominant dogma of Laranianism often referred to as "The Reluctant Way" that holds sway in this region is a shift from the more moderate some would say temperate views of the Order at large. Ilor and his kind are forging a rift in the order, and the debates at ecclesiastical gatherings are often heated. Ilor is among the leaders of this movement, and one of its highest-ranking proponents. Others include Larin of Uder the influential Abbott at Welur abbey in Kanday and Varik of Delsyn the *Sulotesa* (Grand Master of Archives) in Thay for the Clerical Order of the Spear of Shattered Sorrow.

The movement is popular among the younger, ideological priests. Priests with a more secular view, particularly those with a taste for political power look upon the movement with disdain and oppose it strongly.

Edine Kynne, the Archbishop of Kaldor is among the most vehement opponents of The Reluctant Way, and has gone so far as to place spies among the sect's followers. So far he has taken no overt action, but he is poised to do so should it become necessary to maintain control of the church in Kaldor. He is particularly concerned with the strength of the movement at Abriel and the need for the sword arm of the church against Maldan Harabor, should that probable situation arise.

The Primate is not yet aware of the extent of this schism, and would likely be disturbed by it. Whether it is based in the true desires of the goddess or the fanatical beliefs of zealots only Larani knows.

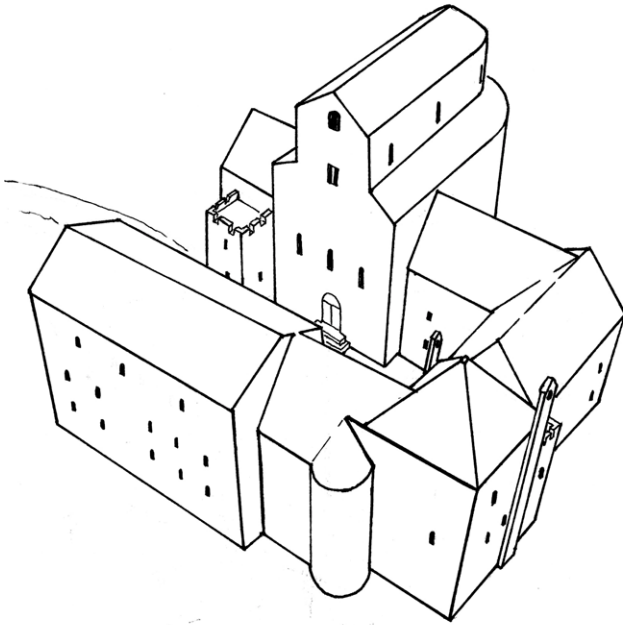


The Order of the Spear of Shattered Sorrow

Abriel holds significant importance to this Clerical Order, each year in early Larane, many clerics of the order travel to Abriel for theological debate followed by fasting and prayer in preparation for the Feast of St. Ambrathas. In recent years Ilor and his followers have dominated these meetings. The debate ranges from tempered discussions to the dangerous verge of heresy. Ilor and his brethren have been holding secret meetings in conjunction with these debates. In 720 they plan to establish a secret order for the purposes of spreading the dogma of their beliefs among clergy.

ABRIEL ABBEY 6

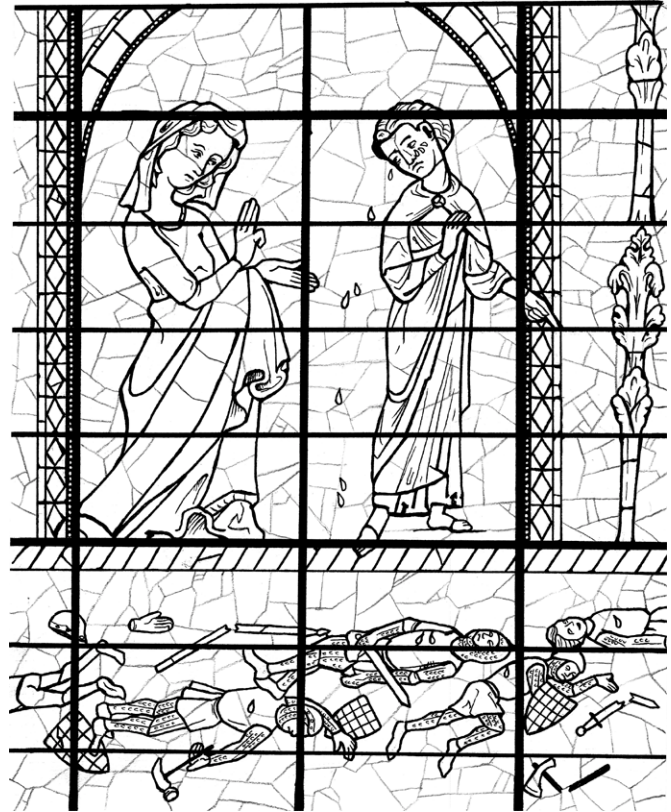
THE ABBEY



Abriel Abbey has historically been held by a likely successor for the seat of Archbishop of the Kingdom of Kaldor, and Ilor of Hadan is no exception. While Ilor cares little for political intrigue and secular affairs, there is a growing movement within the Laranian church in Kaldor to return to a stronger moral and theological base in the church teachings. Ilor is among the leaders of this movement, and widely respected throughout the church.

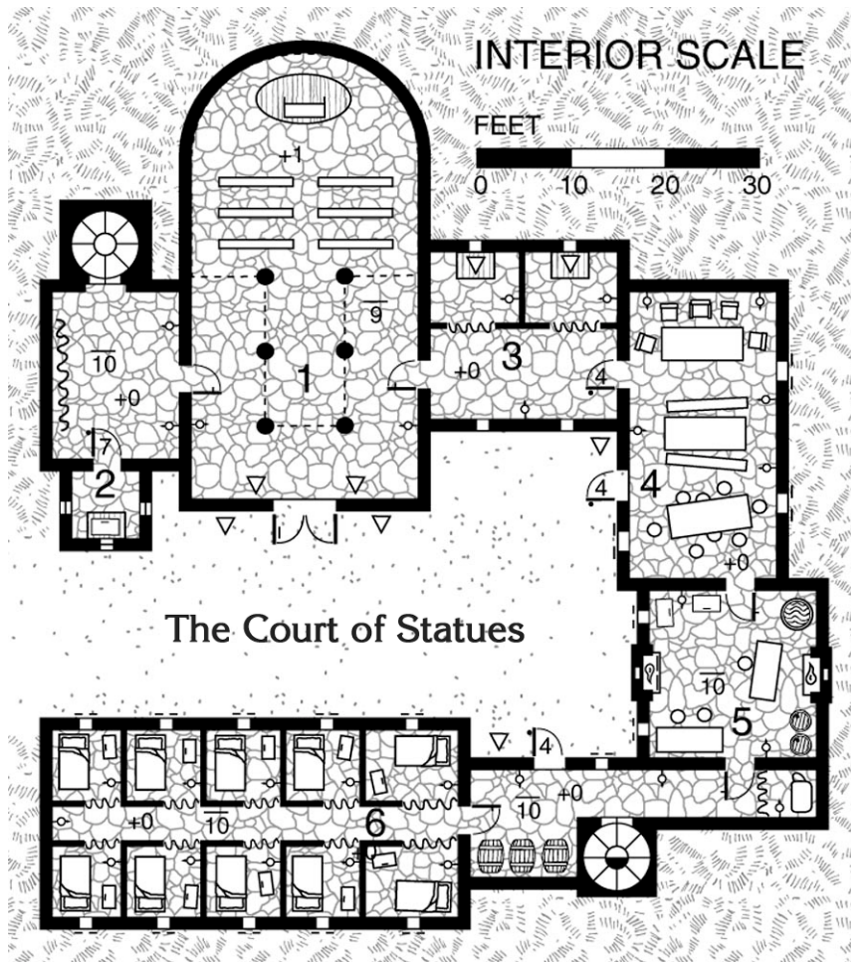
Built in 170, the Abbey, has been an oasis of religious dogma and chivalric idealism in a sea of secular feudalism for over 5 centuries. Images of the Lady of Paladins, her demigods, saints, and heroes are a strong theme of the décor of the abbey. The tapestries, paintings, sculptures, and stained glass windows of the abbey are known to those who study Laranian theology as far as western Lythia. On occasion learned priests from Emelrene, Shor-kyne and Trierzon have visited the abbey to study these beautiful theological works.

THE LADY OF RELUCTANCE



The best known of these works is the stained glass window of Larani that spans the curved wall of the temple hall. Clerics and glaziers from Lythia have traveled to gaze upon its beauty and the craftsmanship of its production. The scene depicts the Goddess on a battlefield (though in her secular robes rather than in her fabled armor). She is walking through the aftermath a tearful Valamin at her side. No less than fifteen knights lay slain upon the field. The scene is quite gruesome, and its theological meaning is much debated among the clergy.

Some argue that it is a warning, deferring to the aspect of the reluctant warrior. Others claim that it depicts the glory of battle over evil. There are countless other meanings attributed to scene many simple variations on a theme set apart by the slightest detail such as the direction an errant dagger points while laying on the field, or the depiction of one knight with only four fingers, or the placement shape, and number of Valamin's fallen tears on six of the slain knights. The history of this great artwork has been largely lost. It is known to be over 500 years old. The craftsmanship is remarkable, modern glaziers have been unable to reproduce the subtler effects.



Abriel Abbey (Ground Floor)

1. The temple hall is the most favored place in Meselyneshire to attend Soratir. The pews in front are reserved for high ranking clerics and a few important nobles. The privilege is jealously guarded as the balcony partially obstructs the view of "The Lady of Reluctance" for those who sit on the floor or stand in the back. At the rear of the hall guarding either door stand two stalwart, finely carved red-marble statues of Knights of Tirith.

The western chamber is a quiet area for reflection by clerics prior to entering the temple. On occasion the bishop has led clerics from a select group in "silent meditation" leaving strict orders not to be disturbed. After mass, the chamber is used by lesser priests to confess lay adherents of lesser means.

The tapestry on the western wall is one of the most magnificent in Kal-dor. Imported at great expense from master craftsmen in Emelrene in 483, it depicts St. Ambrathas and the Knights of Tirith in their glorious battle for Alamire.

2. This small locked chamber is used to store the valuables of the temple and occasionally that of visiting dignitaries.

3. The private confessionals are available to those with an appropriate title. Less wealthy knights make confessions in the western chamber "before St. Ambrathas."

4. Common Hall. This hall is used for meals and for the entertainment of important nobles. During non-meal hours it doubles as an administrative Hall.

5. Kitchen. Household duties are required of all of the temple acolytes. At times, women from the peasant households provide labor to the bishop in the Abriel Kitchen. Penelena of Telis is currently responsible for planning and preparing meals as well as assigning kitchen duty. She fears the visibility may reveal her secret.

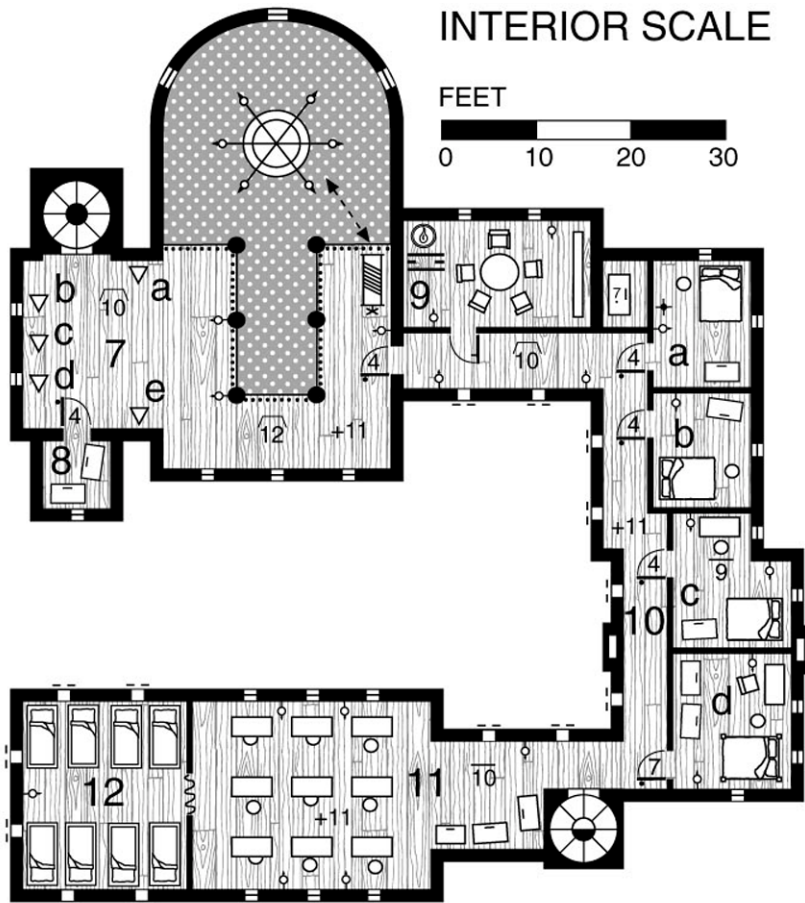
6. Women's Dormitory. These quarters are reserved for the female clergy at Abriel. The north east bed is an exception. It is occupied by Harbain of Delwë who is bed-ridden. Gris of Tandë occupies the other larger bedroom. She is also gravely ill. Bunks were moved into the two westernmost quarters to accommodate ten additional women. Younger women must share quarters. Salwenë of Kailis shares quarters in the archives with Lerrisa of Gwain.

The Court of Statues

The courtyard outside the main temple doors has an eerie disquieting atmosphere. Four ornately sculpted granite statues: At the west entrance stands the Great Winged Lion, Mendiz, ever watchful; before the great temple door stands a statue of St. Ambrathas; outside the southeast door is a solemn statue of Valamin; before the northeast door, an unknown paladin kneels in prayer.

These statues require constant repair and upkeep by the acolytes. A common punishment for acolytes or penance for a knight at Abriel is "pigeon duty."

ABRIEL ABBEY 8



Abriel Abbey (Second Floor)

7. Balcony. Acolytes, lay worshipers of less than gentle birth, and women attend Soratir in the balcony. The view of "The Lady of Reluctance" is obscured by the chandelier, which can be raised by means of the winch. The west wing of the balcony is used for the display of a variety of religious artifacts. Currently on display are:

(a). Rysal. This statuette carved in fine Hârníc Oak depicts the demi-divine and little known Centaurin servant of Larani.

(b). Knights Lament. A painting by the Shiran master artist Baranë of Paradin. It depicts a young squire during Tirinon.

(c). The Blade of Orthas. This bejewel broadsword hangs from two silver hooks mounted on an oak placard. The blade is a stylized replica of the sword believed to be carried by the commander of the Knights of Tirith. The blade was made by master craftsmen but is poorly balanced, and would likely break if used in combat. Laranian Knights at times take oaths "On the Blade of Orthas" by placing their left hands on the flat of the blade. Such an oath is believed to be an act of great piety.

(d). Dolithor in Glass. This magnificent Castle in clear glass, Dolithor, was reportedly given to the fourth Bishop of Abriel by a Sindarin Master Glassworker.

(e). The Wine of Saint Paralyne.

This hallowed rack holds a single bottle of fine wine. It represents the bottle of wine Saint Paralyne brought to the congress of clergy appointed to select the first Laranian pontiff. Each year the finest bottle of wine available is placed on this wine rack. It is opened and served to a select few during the feast of St. Ambrathas.

8. This secondary storage chamber is used to house valuables for which there is not room on the first floor.

9. Council Room. The temple masters use this room for discussions.

10. Masters Quarters.

(a). Suloan (Master of Archives) A secret door hides a chest with restricted works.

(b) Menoran (Master of Fighting Order)

(c) Obasaran (Master of Secular Affairs)

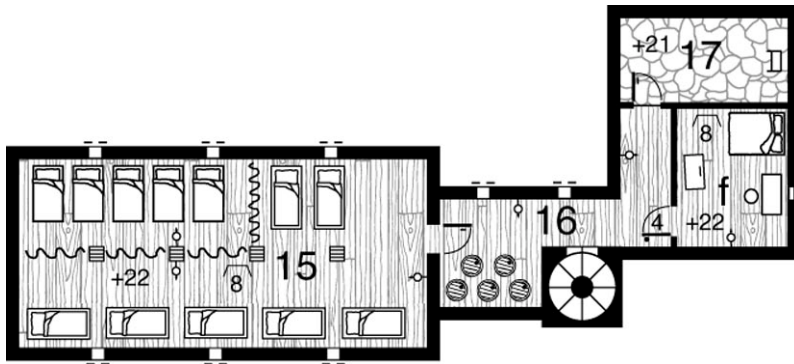
(d) Serolan (Abbott of Abriel).

(e) [See the cellar] Lerissa of Gwain. Formerly quarters of the Suloan, Lerissa was moved here either to demonstrate her status as equal to the other temple masters, or because the floor is damp during much of the spring.

(f) [See third floor] Valaran (Master of Acolytes)

11. The Study. This room is used for organized and individual lecture, study, and the transcription of written works. The chests contain writing materials, prayer books and other supplies.

12. Men's Dormitory. This room contains eight bunk beds for the male priests of the Abbey.



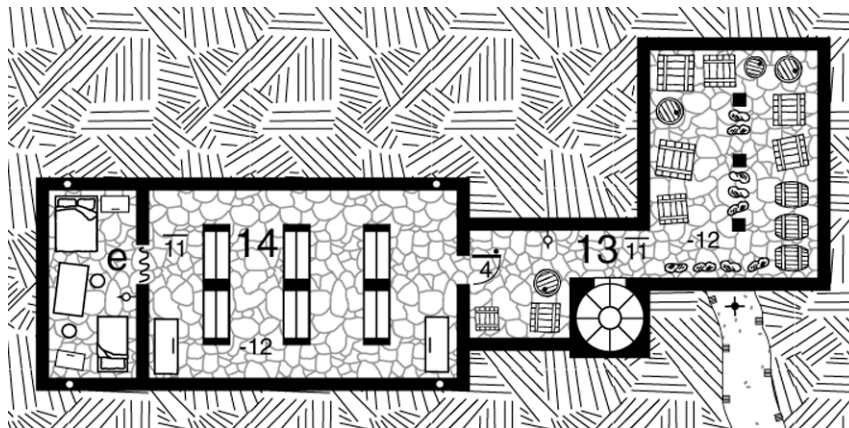
Abriel Abbey (Third Floor)

10 (f). Valaran (Master of Acolytes). This master's room was added when the cellar began to seep and the Master of Archives moved to the second floor. The seepage coincided with the arrival of Lerissa of Gwain.

15. Acolytes Dorm. Female acolytes are afforded a modicum of privacy by a heavy partitioning tapestry

16. Storage.

17. Rooftop vigil. Knights who undergo Tirinon in the early summer do so on this solemn rooftop, weather permitting. A small stone altar sits at the east end overlooking the graveyard.



Abriel Abbey (Cellar)

10 (e). This chamber was formerly used by the Suloran. Lerissa of Gwain was assigned here. The west wall seeps in the early spring. Salwenë of Kailis has been assigned to assist Lerissa. She sleeps on the smaller pallet. The assignment was made in part to minimize overcrowding in the women's dormitory.

13. Foodstuffs and other supplies are stored here. Abriel produces a fair wine and very good ales. The Bishop's Ale in particular is a dark ale with a strong bodied deep malt flavor.

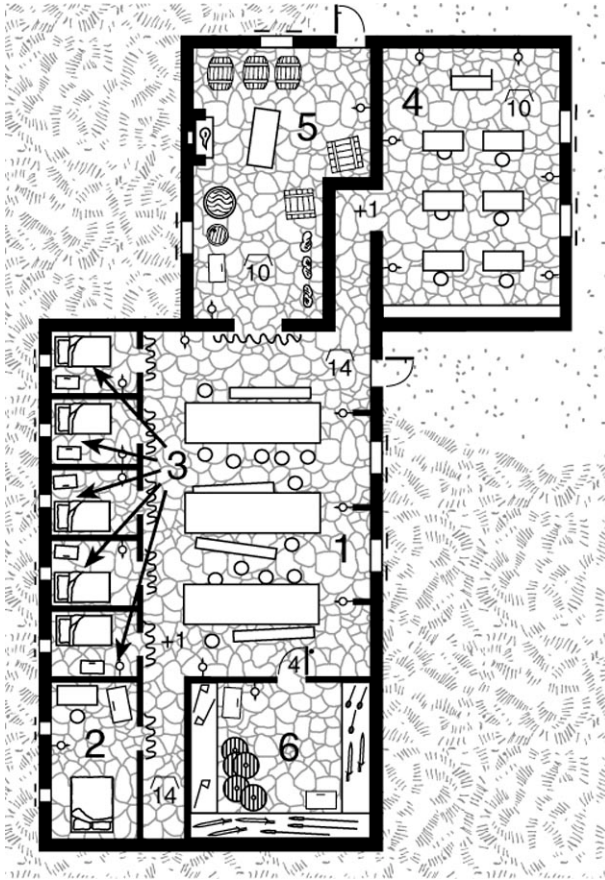
14. Abriel has significant regional archives. The collection is not as large as those in Tashal or Caleme. The Bishop has removed a number of works from general circulation. The collection tends to reflect the beliefs of the Reluctant Way.



And the bishop took the sword from the ever-eager warrior, staying him with his hand saying, "Has thou not seen enough bloodshed to repent your ways and seek enlightenment in the Reluctant Way? To feel life instead of death, to give instead of take, is this not the path to follow? I sayest true when my hands will not wield the weapons you think you can not live without." And the bishop walked towards the cliff of Abriel and threw the cold steel into the stream below. The warrior saw then what the servant of the divine meant and wept for many hours asking his goddess for forgiveness, remembering the tale of the Lady of Reluctance.

*From Ilor of Hadan's
Personal Journal*

ABRIEL ABBEY 10



Chapter House

Normally a noisy place, the chapter house at Abriel is gravely silent. Cheering, swordplay and other knightly "virtues" are strictly forbidden by the Bishop. Meals are taken under silence and anything but a normal conversation about important issues such as divinity, are considered very inappropriate by the masters of the abbey.

Knights in attendance commonly spend a minimum of one night in ten in vigil over their armor and weapons. Daily confessions are encouraged, and penance is often excessive. In addition to the penance a Knight might receive from priests elsewhere for even the smallest of sins, the penance at Abriel is likely to include any of the following: additional nights of vigil; attendance/assistance at a second daily mass (the knights attend as acolytes); vows of silence of one to ten (or more) days. While these penances may seem minor, for a Knight there is nothing worse.

It is rumored that those knights who stay at Abriel long enough eventually commit the gravest sin: lying in confession. The sinner hopes beyond all else that he can fabricate a believable enough egregious sin, that the cleric will send him on a dangerous quest and thus free him from the torture of life at Abriel.

1. Hall. Originally intended for dining by common soldiery, the knights unlucky enough to be stationed here use this hall for meals at the Bishop's request.

2. Reblena's quarters. The current Kt. Commander is Golian of Bireth. He has served for two years. He was appointed to the position due to the political influences of the Bishop of Kephrus.

3. Knights Quarters. These five quarters are provided for a squadron of Melana. As the bishop has restricted the military presence to a half squadron, additional privacy is afforded.

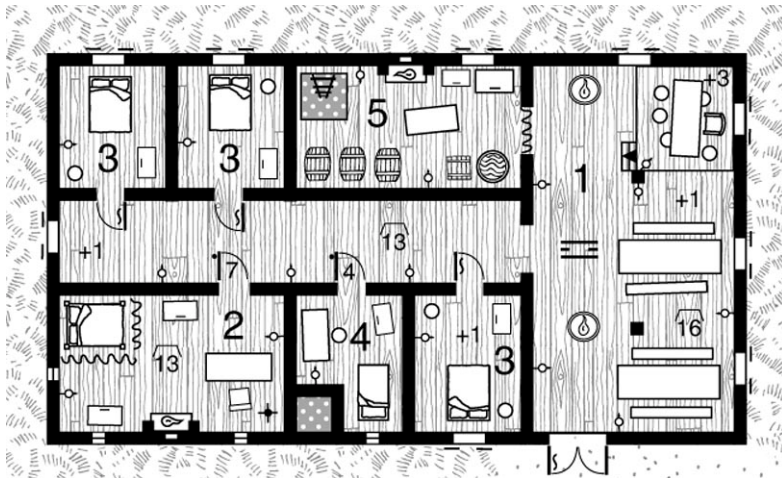
4. Meken Dormitory. There is room for a full company of common soldiers here. Ilor had the bunks placed in temporary storage and converted the room to a study. Knights of the order are expected to spend considerable time here under the supervision of temple priests.

5. Kitchen. The Bishop's budget does not permit a full time cook. The bishop believes that common work is good for the noble soul. The Knights have secretly given in to the habit of paying a local housewife to prepare occasional meals.



6. Armory. Bonded Master Weaponcrafter Thrarthir of Virimē. The small contingent of the Lady of Paladins at Abriel affords Thrarthir significant leisure time. What he doesn't spend at the Chapel Inn, he uses for the forging of his greatest work. A battle sword of the finest quality that he has been working on for a decade. (see [I] on the local GM map to locate the smithy)

ABRIEL ABBEY 11



Abriel Hall

The original manor house at Abriel prior to the construction of the Abbey proper. The wealth of the Abbey allows the building's maintenance and upkeep.

1. Abriel Hall. Hundred Moots are held here. The hall is also used for matters of state and receiving of nobles.

2. Bishop's Quarters. The bishop's personal quarters. The secret door leads to an underground passage. The passage forks, continuing north to a hidden door on the southern wall of the Abbey cellar (in the storage room). The second fork continues east to a hidden location off map.

3. Guest Quarters. Several rooms are afforded for visiting dignitaries.

4. Steward of Abriel Leradas of Elen, Leradas is frail, but a competent administrator. He resolves manorial matters on the Bishop's behalf and serves as an assistant to Ilor during Hundred Moots.

5. Kitchen. The bishop keeps a well-stocked kitchen and cellar. Ilor prefers his own company and the council of a select few.

The Crypts (F)

Two granite statues of the Knights of Tirth stand swords raised and crossed above the entrance to all five crypts.

* This crypt holds the mortal remains of the high clergy of Abriel, including:

Priests of Abriel

125-149 Ronas of Fylams

149-153 Ambon of Meylyn

153-170 Terryn of Alarrë

Archbishop's of Nurelia

170-171 Terryn of Alarrë

171-199 Delarn of Alonda

199-234 Kobryn of Brant

234-235 Domas of Aragen

235-235 Arkith of Tyunë

Bishop's of Nurez

235-273 Arkith of Tyunë

273-319 Analas of Karondel

319-322 Berdar of Tane (1)

322-365 Bores of Orgael

365-377 Fanár of Tane (2)

377-405 Aradis Orgael

405-447 Helir of Londel

447-501 Erba of Artane (1)

501-555 Penelena of Ebor (3)

555-562 Mortin of Aphren

562-591 Laeden of Artane (1)

591-633 Baild of Elendsa

633-670 Jonil of Pierstel

670-676 Kalabin of Elendsa (1)

676-701 Ered of Curo

708-714 Parga of Indama

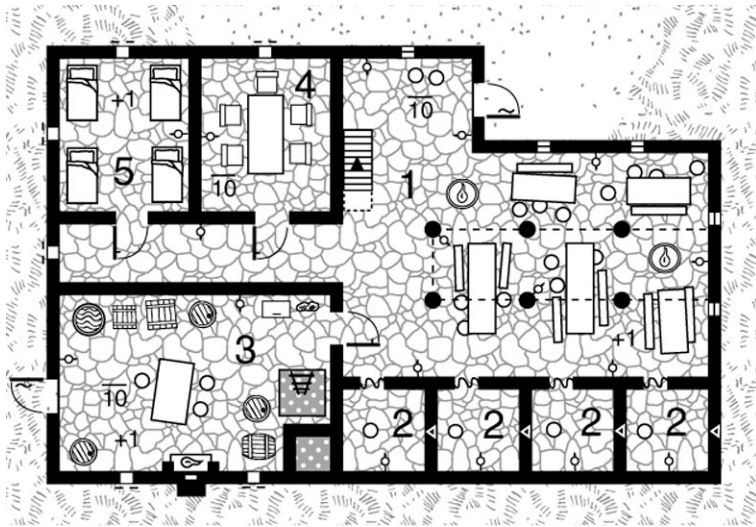
❑ The GM may wish to optionally expand one or more of the buildings here to lead to extensive underground catacombs and additional crypts.

(1) Went on to become Archbishop of Caleme. The remains of these leaders are interred at Caleme but memorials were erected here as well. Edine Kyne the current Archbishop served as Bishop of Nurez from 701 to 708.

(2) Killed in a skirmish outside of Olokand in the Kaldoric Civil war

(3) Abriel's only female Bishop

ABRIEL ABBEY 12



Chapel Inn

This building served as the Laranian temple prior to the construction of the Abbey. In 235 it was desecrated by attacking Taelda tribesmen. The building withstood the attack, but some minor artifacts and part of the library that had not been moved to the abbey were lost. The building was sold to the Innkeepers Guild in 243.

Frelyn Varela obtained the franchise in 702 when the previous owner died of natural causes at the age of 102. Frelyn and her sisters worked as courtesans in Tashal before acquiring the franchise.

First Floor

1. Hall. Though the Laranian trappings were destroyed during the Taelda raids, the decor of the Chapel Inn has some resemblances to a Laranian Temple. Luxurious white tapestries with rich red trim line the doors and windows. Old pews provide seating, and red and white checkered linens cover the tables. The Inn boasts a tapestry of the winged lion Mendiz.

2. Confessionals. These small rooms off the hall were used as confessionals when the building was a temple. The rooms are rented hourly for those who wish to have something to confess.

3. Kitchen. Hanlena prepares meals here. Eilith is a competent brewer, and makes light ales, sometimes including berry or fruit flavorings. Four journeymen innkeepers all attractive young women with open attitudes work with the Frelyn's to satisfy customer's every desire.

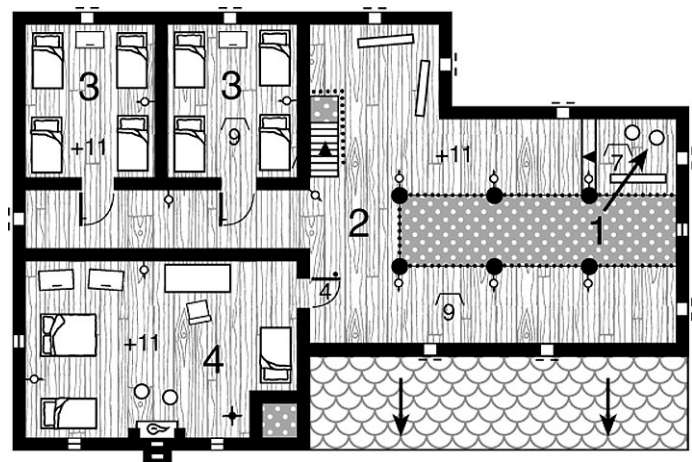
4. Private Hall. At some point in the evening, the party at the Chapel Inn begins to migrate to this private hall. Only a few trusted and known friends are given the privilege. Frelyn and her sisters save the finest wines and other delights for those admitted here.

5. Private Room. Frelyn shares this room with her sisters and Tallyn of Baeryn. The four have what is considered by the Bishop as an amoral attitude toward sexual relationships. Ilor's intolerance is not yet sufficient to result in legal action. An effort that he believes exceeds his moral authority.

Frelyn is a highly skilled medium, and prescient. Hanlena is nearly as talented at psychometry. Eilith is clairvoyant. All three women are sensitive to magical/psionic effects.

Hanlena and Eilith also have some medium talent, but they are not as gifted as their sister. The three use their gifts only for protection of themselves and others. Their talents allow them to regularly communicate with various ethereals.

Frelyn communicates frequently with "Domas' Shade", but so far has been unable to put his spirit to rest.



Second Floor

1. Musician's Box. This nook off the main balcony was the only portion of the buildings interior design that survived the Taeldan raids. It is used occasionally by traveling harpers for performances. It is also a favored spot for amour.

2. Balcony. Each evening at dusk, Frelyn, her sisters, and their journeymen innkeepers perform "the lighting". This solemn ceremony begins at the top of the stair. Frelyn lights her candle from the "eternal light" (a candle at the top of the stairs that is always lit) and then lights candles held by her sisters who in turn light candles and lamps along the balcony. The Valera's believe the ceremony puts the spirits at peace.

3. Guest Quarters. These rooms are available for guests of the Inn.

4. The Serekela's suite. This room is not frequented by the Varela's. The Archbishop of Nurelia Domas of Aragen was killed in 235 when he was caught outside the newly constructed Abbey. The Varela's respect the spirits peace and rent the room only to those they believe will not disturb him. The secret door has long since been forgotten. It leads to a secret escape tunnel under the cellar that exits off map to the southeast.

Cellar (not mapped).

This room is used for storage. The Varela's do not spend time here as the northeast corner of the cellar was used for questioning "heretics" when the building was a temple. The psionic residues are uncomfortable.

REKELA (BISHOP) OF NUREZ

Ilor of Hadan (49)

Ilor Hadan was named Rekela in 714. He is idealistic, and far more concerned with spiritual matters than with temporal affairs.

Ilor despises his duties as Bailiff of the Hundred, and would prefer to leave them to the Serolan, who is much better suited to the task. Protocol and etiquette prevent this however, except under dire circumstances.

Lerissa of Gwain (Adjunct of the Rekela)

Lerissa is the youngest daughter of Menald of Gwain, a minor Melderyni Knight who holds Avenzy Manor as a Bailiff for Haras of Hilbern, Lerissa entered the church, leaving the politics of arranged marriage to her older, more willing sisters.

Always headstrong, and highly principled, Lerissa rose swiftly in the ranks of the Order of the Spear of Shattered Sorrow in Thay. She served as an assistant to the Turintesa (Grand Master) until she came in conflict with the leaders of the Order of the Lady of Paladins regarding the morality of their campaign against the Solori. Unable to constrain her charge, and unwilling to punish her, Kerthede of Talvail, the Turintesa and Laranian Primate sent her away on a spiritual sabbatical to Kaldor.

Lerissa arrived at Caleme in 706, and was quickly dispatched by Edine Kyne to Abriel, for her spiritual growth, or at least to where she could do the least damage.

Lerissa is still headstrong; she dislikes Ilor, often thinking him a fool, though she serves him faithfully. Though highly moral and principled, Lerissa is also pragmatic enough to see the very real danger, even if the Rekela is blind to it.

Lerissa considers her stay in Kaldor a demotion from the position she held in Melderyn, and her assignment to the Bishop is ambiguous at best within the religious hierarchy. While she considers herself above the other Masters, of the Abbey, they do not. Ilor compounds the confusion, by supporting his own beliefs rather than that of his underlings.

Lerissa is young, healthy, and of modest looks. Still she has drawn some unwanted attention from several suitors. Her heart however belongs to the goddess.

Serolan of Abriel (Abbot)

Lorald of Banadar (52)

Lorald is a devout Laranian, but has a better handle on practical matters than Ilor. He has a better understanding of local custom, and law than Ilor. The Rekela relies upon his judgement heavily during Hundred Moot, and on occasion has abdicated his responsibilities to the Serolan altogether.

Valaran (Master of Acolytes)

Jiryla of Sarion (37)

Jiryla is fat, ugly, and hated by her charges. Her foul temper and disdain for everyone and everything make her intolerable. Her career in the church was severely hampered by this, until the Rekela championed her for the Valaran's position in 716. The Rekela believes that Jiryla's harsh style makes for better priests.

Obasaran (Master of Nobility Relations)

Holdis of Karondel (29)

Holdis is the second brother to Sir Eris Karondal, Lord of Hetheron manor and Sheriff of Balimshire. Holdis, is an honorable man, and despite his clan's allegiance to clan Dariune, and constant requests for sensitive information, he has remained faithful to the church. While Ilor trusts him, Bragnan does not. The two men do not get along.

Suloran (Master of Archives)

Querenë of Debtun (29)

Querenë is the daughter of Ulwin of Debtun, Lord of Stryllin Manor.

Querenë is the eldest daughter of clan Debtun, she avoided an unwanted marriage by entering the church. She is a lover of the written word, and the occasional Knight of the Order of the Lady of Paladins.

ABRIEL ABBEY 14

Menoran (Master of Fighting Order)

Bragnan of Sosora (35)

Bragnan served as an itinerant priest with the Lady of Paladins and has a strong loyalty to them. He believes the Rekela is a fool and will be consumed in the coming battle, but his position allows him to do little about it. He fears the Obasaran would have the church crown the Earl of Balim.

Matakea (Temple Priests)

Shanë of Hobarney (32)

Shanë is the third son of the Lord of Dynes Manor. Painfully shy, Shanë has maintained his vows of silence for three years.

Lurina of Tobro (21)

Lurina fled serfdom in Melderyn, and lived a year and a day in Thay as a cutpurse and near-do-well. He declared his own freedom, and after much protestation was eventually admitted into the church. At 21 years of age, he has great talent, and was sent to Abriel by a Melderyni priest offended by his lack of noble birth. Lurina is seizing the opportunity to improve his standing in the church.

Joribir of Wincarth (37)

Joribir, eldest son of the lord of Forwelms Manor disobeyed his father and entered the priesthood. He is estranged from his father, but his younger brother Golen will likely resume relations upon succession.

Harbain of Delwë (72)

Harbain is 72 and in very ill health. He served as an administrative priest under Kalabin Elendsa and has chosen to spend his final days at Abriel.

Orkal of Ralgunth (34)

Orkal's elder brother Gyles holds Airth Manor. Orkal is overly fond of wine, and the table, and his girth gives ample evidence of this.

Loral of Ebor (33)

Loral is the second eldest of Clan Ebor. Loral has a younger brother at Iversen. His older brother Minal will likely soon succeed his sickly father as Bailiff of Alburnet. Loral is a happy and gregarious priest.

Somewhat out of place at Abriel, though he does not let his demeanor affect his responsibilities of faith.

Malsyr of Vardyn (24)

Unpopular with his father, Malsyr's stepmother, Alycia, succeeded in his place as Lady of Kessen Manor. Shunned by his family, Malsyr resents his mother's dalliances at court (She is a rumored consort of Baron Ethasiel) and harbors ill will, secretly believing she was complicit in his father's death.

Mergal of Sedor (55)

Mergal's low position in the church is not surprising given his rank incompetence.

Kaergë of Churebor (46)

Kaergë served as Menoran at Colovos, until his left arm was severed just below the elbow in a skirmish with brigands. He handles his injury well, and is comfortable with his new surroundings.

Pelaen of Turen (39)

Pelaen fled Chybisa where he was declared outlaw for brigandage. He murdered and assumed the identity of an itinerant Laranian cleric, and found himself forced to live the dreary life at Abriel. Pelaen has made contact with Telin the Red's men, and occasionally supplies them with information. He is secretly a frequent guest at The Chapel Inn.

Lamnis of Gravelyn (26)

Lamnis was cast out of his ancestral holdings and his inheritance, Sateilton Manor, by his father for sexually abusing his step sister Julyn. Lord Gravelyn would have killed his own son upon his discovery were it not for Julyn's pleas. Banishment to the priesthood seemed more humane than death. Lamnis is sexually deviant, and a diabolical psychopath. He has been at Abriel for only six months.

Sarond of Asway (31)

Clan Asway's fate has dwindled due to the inept manor in which Sarond's father has managed his two past bailiffships. Sarond finds the priesthood a place where mediocrity is more accepted.

Myndael of Barathy (102)

Myndael's brother's nephew is Lord of Greaven Manor. She is one of the eldest women in Kaldor and in surprisingly good health.

Silia of Margant (37)

Silia's father is Lord of Gentes Manor. Her brother will inherit. Silia is a daydreamer and somewhat flighty.

Ilanë of Aphren (17)

Ilanë is the youngest daughter of clan Aphren. Her older brother Bolvis serves at Iversen. Her younger brother started as an acolyte here at Abriel in 719. Her faith in the Lady of Paladins is great. She is favored among all the temple priests at Abriel for promotion.

Merelë of Asvelar (42)

Merelë was sent from Konefal manor by her husband Lord Asvelar. He declared her mad, but it is more likely that he preferred the bed of her chambermaid. She is an angry and vengeful woman.

Nerlael of Asten (36)

Nerlael is the eldest of three daughters of Udrin Asten, bailiff of Jupanel Manor. Nerlael is grotesquely ugly and entered the priesthood to save her father the cost of a dowry.

Melkëa of Drelin (22)

Melkëa was common born, and entered the church in Tashal. She is an attractive, competent and dedicated priest. She twice rebuked Lamnis for his advances before Alagynë arrived.

Salwenë of Kailis (29)

Salwenë was the only daughter of a promising young knight and newly appointed bailiff tragically killed in a horrible accident at the Royal Chelebin Tournament just prior to her birth. Her mother died in labor shortly thereafter, and Salwenë entered the church as a newborn.

Qundynë of Elena (37)

Clan Elena's fortunes are rising. Qundynë's father and two brothers each serve as bailiffs under clan Dariune. She believes that with daily prayer and concerted action, her clan will gain holdings of their own.

Gris of Tandë (59)

Gris is in gravely ill health. She is not expected to survive the winter.

Bendael of Stelsen (42)

Bendael is a strikingly beautiful woman and is constantly beset upon by suitors. Her vow of chastity has never been broken.

Kerthedë of Abar (22)

Kerthedë is newly ordained and was excited for her career...until she was assigned to Abriel.

Arilëa of Diren (19)

Arilëa avoided an arranged marriage by entering the church. Her refusal cost her clan dearly.

Ashesa (Temple Acolytes)

Krilon of Aphren (14)

The youngest of clan Aphren Krilon lacks his elder brother Bolvis' martial skills, and his sister Ilanë's talent for the priesthood. The lad is but 14, nervous, awkward, and terribly bashful. His family hopes that time at Abriel will allow him to find his path.

Banë of Anaelin (23)

Banë is the eldest acolyte at Abriel. Having served as an acolyte since the age of 13 in 710. Banë is an idiot, kept by the temple. He is a capable gardener. Banë has a fondness for "The Lady of Reluctance", and often spends hours gazing upon it.

Jarthan of Farmel (16)

Jarthan disappointed his father by bedding a farmer's daughter. Lord Farmel sentenced him to the ascetic life at Abriel. Jarthan visits The Chapel Inn whenever possible.

Meriven of Veriel (15)

Meriven is an idealistic and devout young woman. She harbors a secret love of Ilor.

Maen of Tonë (14)

Maen has wanted to enter the priesthood since he was seven. He believes deeply that the Lady has called him to service. He sometimes has disturbing dreams often involving religious dogma. He speaks of these with no one.

Craryk of Aris (12)

Craryk was a cutpurse who robbed a wealthy Laranian in Tashal. To save his hand from the axe-man's blade, he entered the church. He has had difficulty adjusting.

Corven of Velon (13)

Corven was destined to become a priest since his mother decided he would on the day she bore him. Corven however would have preferred to be a harper.

Alagynë of Ebor (16)

Alagynë followed her brother to the priesthood. She is extremely naive. She has difficulties with the Valaran, and is being sexually abused by Lamnis. Her protests have been met with rebuke by Jirylya.

ABRIEL ABBEY 16

Korodynë of Elena (14)

Qundynë's Niece, Korodynë's descent is through the eldest line. She is ambitious. Though she loves her Aunt, she is a pragmatist, and believes more in action and less in prayer.

Penelena of Telis (19)

Penelena took her name after she escaped serfdom from Earl Curo in 718. She managed to evade riders for a year. Her experience as a chambermaid at Gardiren allowed her to impersonate a Melderyni noble's daughter. A distasteful liaison with a Lia-Kavair forger in Olokand resulted in means sufficient to carry out the ruse and enter the church. She still fears capture.

Brenylë of Wincarth (12)

The eldest daughter of Golen Wincarth, heir apparent to Forwelms Manor. Golen hopes Brenylë can restore the rift in their clan and bring Joribir and their father together before his death. Brenylë is the youngest acolyte having arrived on the last tenday of 719.

Nelafayn Hundred

The hundred is an important part of Meselyne shire. Sheriff Maldan prefers the light hand of the Bishop on politics in Nelafayn and is happy with the weak military strength maintained by the church.

The three most important annual events in the region are the arrival of fur road caravans in Olokand, the Royal Chelebin tournament at Olokand, and the celebration of the Feast of St. Ambrathas at Abriel.

Manorial Courts

Manorial courts operate under the same structure. Abriel holds its Manorial court on the 10th of each month. Abriel's steward holds this court. The manorial court has no authority over felonies, civil suits brought by freemen, and professional pleaders are not admitted.

Court matters are dealt with in a specific order. First come the Lord's pleas or matters to which the Bishop was a party. This includes any dispensation of royal justice in addition to more mundane matters such as trespasses against the bishop including withdrawal of rents and services, fines or "amercement" for various minor transgressions or permissions. Heriots paid, relief sought and so forth. Manorial officers are elected or appointed as appropriate, and take their oaths.

When court is held, all villeins must attend or send a suitable excuse. Freeholders are also required to attend. Those having matters before the court are referred to as suitors, the remainder are the jurors. Anyone unable to attend may send a substitute suitor known as an essoin in their stead. Lower courts prohibit professional litigants.

Court begins with the listing of the jurors followed by a listing of the essions. The jurors then present the offences.

Next the village pleas are heard, or matters involving the whole community. Such as dealing with stray cattle, harboring malefactors at harvest, and breaking the laws of husbandry.

Finally matters between villagers are handled, including slander, trespasses, transgressions, debts, covenants and pleas of land.

Summons

Courts have the authority to issue writs. When the issue at hand is a civil matter, courts may send up to three summons to appear before the court, and the party in question may send up to three essoins (excuses). In such cases, the court is entitled to issue destraints a practice of collecting valuables and holding them until the party in question appears.

Pleas

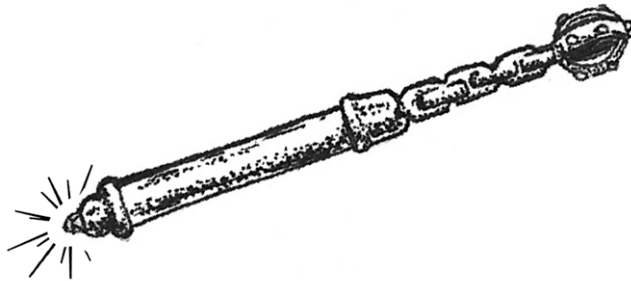
Matters before the court are handled in a specific pattern. Following presentation of the matter by the jurors, the suitor or the party bringing suit would argue the plea stating in a straightforward matter the facts in question. The defense then may argue its case, often doing nothing more than flatly denying each statement made in the original plea. Each side receives a rebuttal, and the jurors issue judgement both as to the facts, the custom of the land and the law. In some cases an inquest or special jury may be called for a specific purpose. Freeman may demand a jury of peers.

Hundred Moot

Courts are important part of the feudal structure, and the Hundred Moot at Abriel is no exception. Generally held on the 15th of each month, the Bishop has chosen to move the date to the 14th in observance of the Laranian Holy day on the 15th. An Ecclesiastical court is held on the 16th.

Abriel is in effect a Royal court, as the Bishop serves as Bailiff of the Hundred in the King's name. As such it is the most powerful court in the Hundred.

The Rekela's Watch



In the early spring of 562, a thief stole into the abbey and lifted one of the richest treasures of the Abbey: Ranunth's Reward, an extremely valuable artifact commissioned by King Brant of Nurelia. This mythral wand weighs about a pound and is crafted in the shape of a ball and chain.

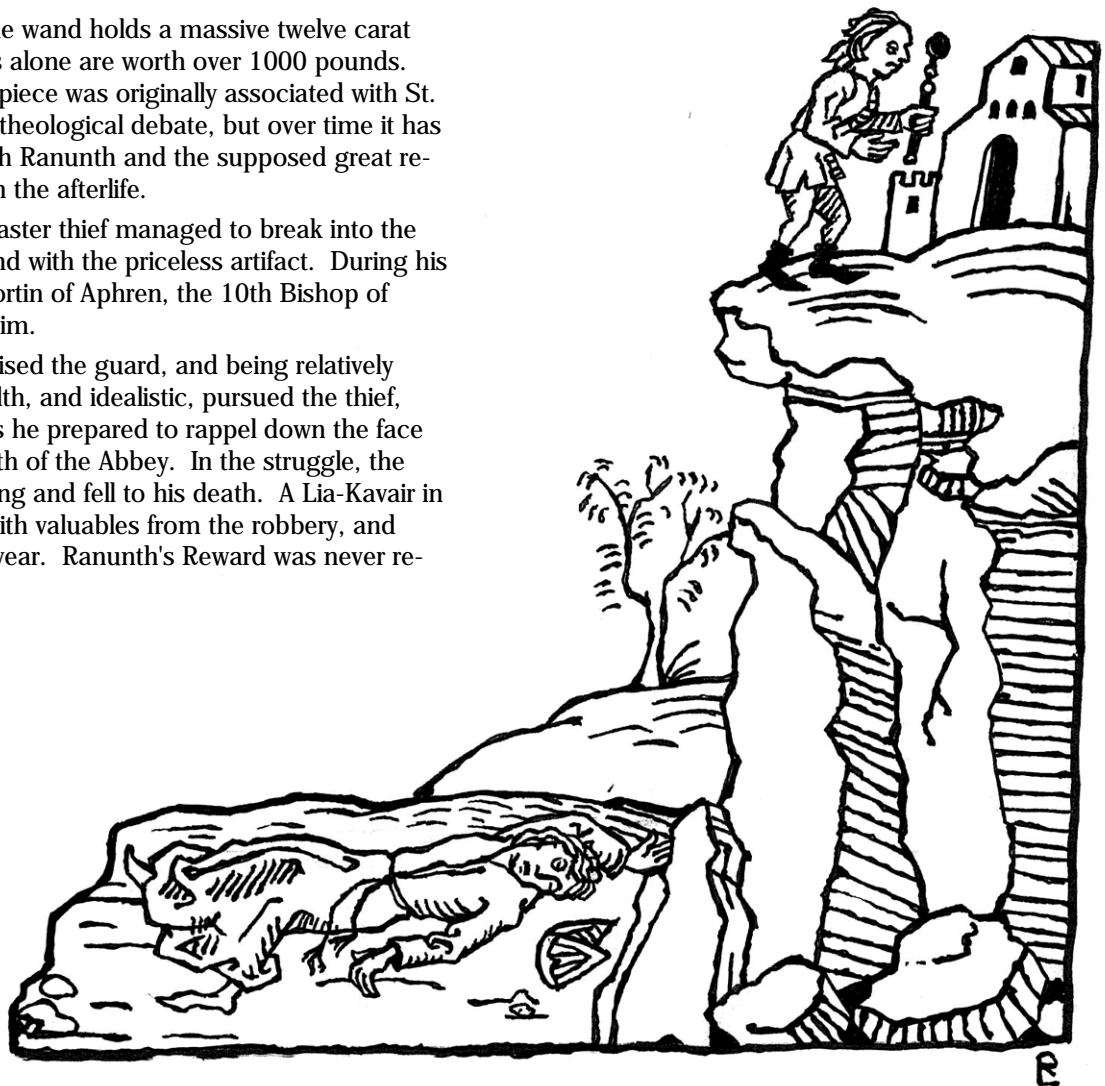
The handle of the wand holds a massive twelve carat ruby. The materials alone are worth over 1000 pounds. Whether or not the piece was originally associated with St. Ranunth is open to theological debate, but over time it has been associated with Ranunth and the supposed great rewards he received in the afterlife.

Regardless, a master thief managed to break into the treasury and abscond with the priceless artifact. During his escape however, Mortin of Aphren, the 10th Bishop of Nurez, discovered him.

Rekela Mortin raised the guard, and being relatively young, in good health, and idealistic, pursued the thief, catching him just as he prepared to rappel down the face of the cliffs just south of the Abbey. In the struggle, the Rekela lost his footing and fell to his death. A Lia-Kavair in Tashal was found with valuables from the robbery, and executed later that year. Ranunth's Reward was never recovered.

Mortin's shade has appeared on occasion, usually in the early spring. It is believed his spirit cannot travel to Tirithor until Ranunth's Reward is returned to the Abbey. Knights stationed at the abbey often quest for the priceless artifact, but it has never been found.

There are several stories told by the knights on guard duty of visitations by the spirit. Most such tales regard the Rekela's ghost warning the guards of dangers they have overlooked. The most recent occurrence was in the winter of 719 when the spirit helped thwart a daring raid by Telin the Red. The Lady of Paladins refers to such events as occurring on "The Rekela's Watch".



ABRIEL ABBEY 18

BATS IN THE BELFRY



Difficulty: *[Moderate]* This adventure is best completed by a team of adventurers with some skill in intrigue and diplomacy. Unless they press the case, (or dabble in forbidden magics) mortal danger is unlikely.

LEAD IN

If your players have already succeeded in capturing Telin the Red from the “All the King’s Men” adventure available with Iverson manor, or if you are in the midst of that adventure, this scenario can be easily intertwined creating either a parallel or divergent plot line.

THE TALE

Either through their investigations of Telin the Red, or through general rumor and loose talk in taverns, the players may hear of “the Black Witch of Abriel”.

CLUES & RUMORS

During the course of play, rumors should surface of diabolical acts of witchcraft in and around Abriel. The veracity and nature of the rumors are left to the GM.

Much of the priesthood are sexually repressed, and take a natural dislike to the wanton ways of the owners of the Chapel Inn. Many of the priests have loose tongues, and the stories of wild depravity they are likely to fabricate have no bounds.

However, Ilor’s ineffectual nature as the Bailiff of the Hundred has prevented action, and it is rumored the Sheriff of Meselyne shire himself is unlikely to take action

against the women after having enjoyed the “hospitality” of the Inn.

The peasantry and freemen in Abriel do not share the common beliefs of the local priesthood regarding the Varela sisters. A few notable priests, chiefly Lerissa, find the entire matter absurd given the impending political situation.

Extensive contacts or espionage from Telin the Red’s organization will allow the players to realize that Frelyn may not be the only possibility. Any of Telin’s men who have met Gwaeryth would certainly attest that she and Frelyn are not the same woman.

THE TRUTH

Frelyn of Varela and her two sisters, Eilith & Hanlena, proprietors of the Chapel Inn are practitioners of an ancient and amoral form of spirit magic. While they are not evil, and keep largely to themselves, Frelyn’s similarity in appearance, and the recent activities of Gwaeryth, Telin the Red’s sorceress consort will likely result in a case of mistaken identity, trial and likely conviction and burning at the stake for witchcraft.

RESOLUTION

The Valera sisters are likely to be accused of witchcraft and called to stand trial at the hundred moot. The interaction of the players, Telin the Red, Gwaeryth, and other events preclude a scripted event, but several possibilities exist:

- ❑ The players are tasked by Frelyn to assist in their defense at hall moot.
- ❑ The players become convinced that Frelyn has no involvement in witchcraft, nor in the activities of Telin the Red, and choose to intervene on their own.
- ❑ The players could care less about Frelyn believing despite her protestations that she is indeed, Telin’s lover. They (or the church) gleefully torture her in an attempt to extract information, and subsequently fan the flames of the pyre. This can set the stage for tremendous player guilt later when they learn that Frelyn and her sisters were indeed innocent.
- ❑ The players, particularly the Shek-Pvar players, mistakenly use magic in a visible way and end up standing accused themselves.

The hundred moot itself is the likely immediate resolution, and presents a variety of opportunities for role-playing. The Abriel text is sprinkled with possibilities, and the GM can assign players the temporary roles of plaintiffs and defendants in the matters at hand, with the GM playing the role of Ilor.